



24/7
Support

6Year
Warranty



canadasecurity.com





Start Strong, Stay Secure

Table of Contents

About us 3

Technology Highlights 5

Domes 7

Turrets 13

Bullets 20

Speed Domes 27

NVRs 34

Accessories 45

Information 48

Software 51



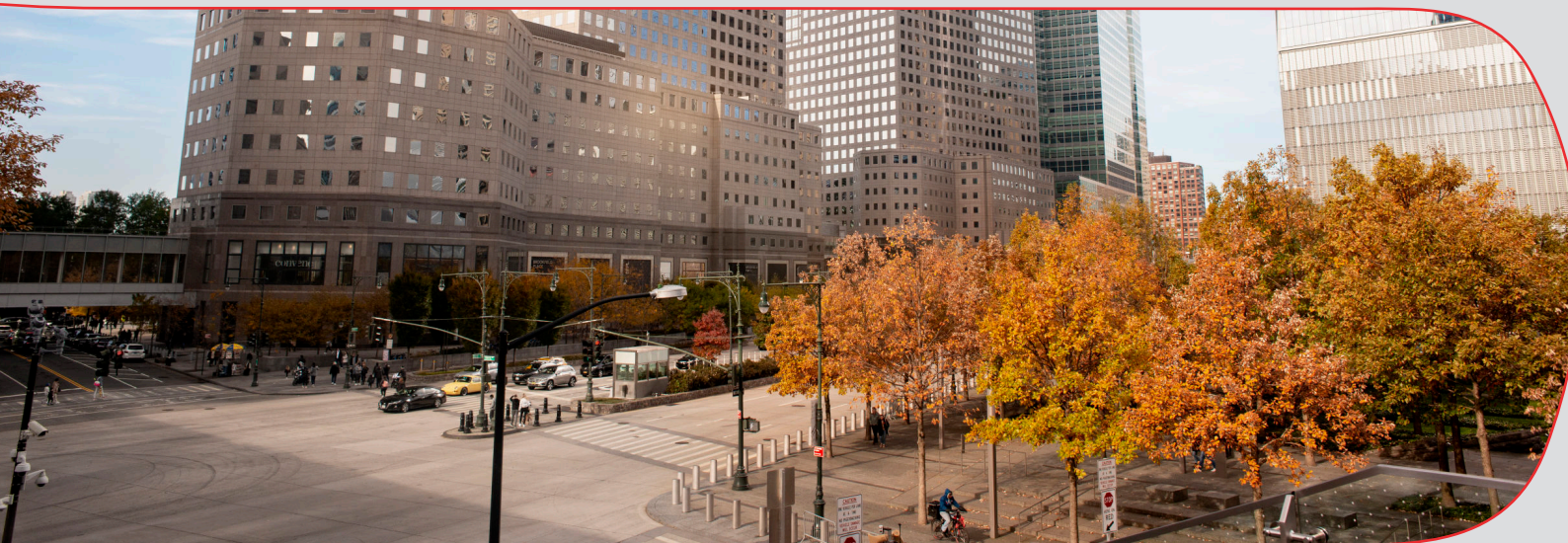
About us

Canada Security stands as a leading provider of surveillance equipment, backed by over 30 years of industry experience. Our extensive product range incorporates the latest technologies to address modern security challenges.

Our **CASE** team, which includes knowledgeable sales representatives and technical consultants across the US and Canada, is committed to meeting your regional needs. We provide thorough support, from product selection to installation guidance and troubleshooting.

With a **6-year warranty** on cameras and NVRs, we demonstrate our commitment to quality. Additionally, our systems comply fully with **NDAA regulations**, ensuring top-tier security standards.

ABOUT US



TECHNOLOGY HIGHLIGHTS

Color Maker
24 hours Full Color



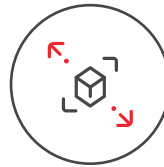
Turbo AI
AI Popularizer
16 kinds of VCA



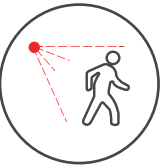
Polar Day
Color: 0.0001Lux



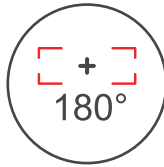
TVP
Transcendent Video Processing



AEW
Auto-tracking
Early Warning



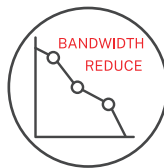
Panoramic
Panoramic Camera
PTZ Camera



VMS
2,000 channels
management



S+265
Save 90% Storage



Plugin Free
No ActiveX



Human/Vehicle Classification
Less False Alarm



ONVIF
S,T,G Supported





Domes



CS-14KS L-2.8mm



CS-15KS L-2.8mm



CS-18KS L-2.8mm



CS-15PS M-2.8m



CS-18MS M-2.7-13.5mm



6YEAR
WARRANTY

| | |
|------------------------------|---------------------------------------|
| Image Sensor | 4MP |
| Lens | 2.8mm Fixed |
| Max. IR Distance | 30m |
| Audio I/O | N/A |
| Built-In Microphone | Yes |
| Built-In Speaker | N/A |
| Min. Illumination | 0.002 Lux |
| White Light Distance | N/A |
| Protection | IP67, IK10 |
| Max. Resolution & Frame Rate | 2560×1440 @ 25fps |
| Wide Dynamic Range | Digital WDR |
| Housing | Metal+Plastic |
| Alarm I/O | N/A |
| Memory Slot | 512GB |
| Video Compression | S+265/H.265/H.264 |
| Operating Conditions | -40°C to 60°C, 0-95% RH |
| AI | Tripwire, Perimeter, Motion Detection |

CS-14KS L-2.8mm

Value Series

Sharp Series

Intelligent Series



6YEAR
WARRANTY

| | |
|---|--|
| Image Sensor | 5MP |
| Lens | 2.8mm Fixed |
| Max. IR Distance | 30m |
| Audio I/O | N/A |
| Built-In Microphone | Yes |
| Built-In Speaker | N/A |
| Min. Illumination | 0.002 Lux |
| White Light Distance | N/A |
| Protection | IP67, IK10 |
| Max. Resolution & Frame Rate | 2592x1944 @ 20fps |
| Wide Dynamic Range | 120dB |
| Housing | Metal+Plastic |
| Alarm I/O | N/A |
| Memory Slot | 512GB |
| Video Compression | S+265/H.265/H.264 |
| Operating Conditions | -40°C to 60°C, 0-95% RH |
| AI | Tripwire, Perimeter, Motion Detection |

Value Series

Sharp Series

Intelligent Series

CS-15KS L-2.8mm



6YEAR
WARRANTY

| | |
|---|---------------------------------------|
| Image Sensor | 8MP |
| Lens | 2.8mm Fixed |
| Max. IR Distance | 30m |
| Audio I/O | N/A |
| Built-In Microphone | Yes |
| Built-In Speaker | N/A |
| Min. Illumination | 0.003 Lux |
| White Light Distance | N/A |
| Protection | IP67, IK10 |
| Max. Resolution & Frame Rate | 3840×2160 @ 20fps |
| Wide Dynamic Range | 120dB |
| Housing | Metal+Plastic |
| Alarm I/O | N/A |
| Memory Slot | 512GB |
| Video Compression | S+265/H.265/H.264 |
| Operating Conditions | -35°C to 65°C, 0-95% RH |
| AI | Tripwire, Perimeter, Motion Detection |

CS-18KS L-2.8mm

Value Series

Sharp Series

Intelligent Series



6YEAR
WARRANTY

| | |
|---|--|
| Image Sensor | 5MP |
| Lens | 2.8mm Fixed |
| Max. IR Distance | 30m |
| Audio I/O | 1/1 |
| Built-In Microphone | Yes |
| Built-In Speaker | N/A |
| Min. Illumination | 0.002 Lux |
| White Light Distance | N/A |
| Protection | IP67 |
| Max. Resolution & Frame Rate | 2880×1620 @ 30fps |
| Wide Dynamic Range | 120dB |
| Housing | Metal |
| Alarm I/O | 1/1 |
| Memory Slot | 512GB |
| Video Compression | S+265/H.265/H.264 |
| Operating Conditions | -40°C to 65°C, 0-95% RH |
| AI | Tripwire, Perimeter, Human & Vehicle Classification |

Value Series

Sharp Series

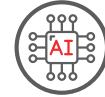
Intelligent Series

CS-15PS M-2.8mm



6YEAR
WARRANTY

| | |
|---|---|
| Image Sensor | 8MP |
| Lens | 2.7mm - 13.5 mm |
| Max. IR Distance | 50m |
| Audio I/O | 1/1 |
| Built-In Microphone | Yes |
| Built-In Speaker | N/A |
| Min. Illumination | 0.003 Lux |
| White Light Distance | N/A |
| Protection | IP67, IK10 |
| Max. Resolution & Frame Rate | 3840×2160@30fps |
| Wide Dynamic Range | 120dB |
| Housing | Metal |
| Alarm I/O | 2/1 |
| Memory Slot | 512GB |
| Video Compression | S+265/H.265/H.264 Motion JPEG |
| Operating Conditions | -35°C to 65°C, 0-95% RH |
| AI | Tripwire, Double Tripwire, Perimeter, Object Abandon, Object Lost, Loitering, Running, Parking, Crowd Detection, People Counting, On Duty Detection, Video Abnormal, Audio Abnormal, Heatmap, Safety Helmet Detection, Human/Vehicle Classification |

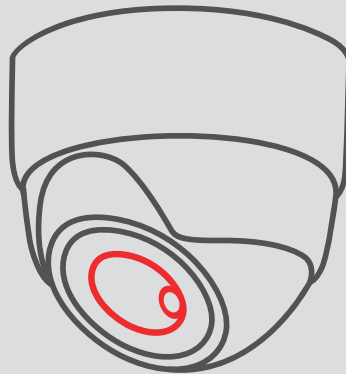


CS-18MS M-2.7-13.5mm

Value Series

Sharp Series

Intelligent Series



Turrets



CS-I4HS L-2.8mm



CS-I5XS L-2.8mm



CS-I8XS M-2.8mm



CS-I5XQ 2.8mm



CS-I8XQ 2.8mm



CS-I8SS M-2.7-13.5mm



6 YEAR
WARRANTY

| | |
|------------------------------|---------------------------------------|
| Image Sensor | 4MP |
| Lens | 2.8mm Fixed |
| Max. IR Distance | 30m |
| Audio I/O | N/A |
| Built-In Microphone | Yes |
| Built-In Speaker | N/A |
| Min. Illumination | 0.002 Lux |
| White Light Distance | N/A |
| Protection | IP66 |
| Max. Resolution & Frame Rate | 2560×1440 @ 25fps |
| Wide Dynamic Range | Digital WDR |
| Housing | Metal+Plastic |
| Alarm I/O | N/A |
| Memory Slot | 512GB |
| Video Compression | S+265/H.265/H.264 |
| Operating Conditions | -30°C to 60°C, 0-95% RH |
| AI | Tripwire, Perimeter, Motion Detection |

CS-14HS L-2.8mm

Value Series

Sharp Series

Intelligent Series



6 YEAR
WARRANTY

| | |
|---|---------------------------------------|
| Image Sensor | 5MP |
| Lens | 2.8mm Fixed |
| Max. IR Distance | 30m |
| Audio I/O | N/A |
| Built-In Microphone | Yes |
| Built-In Speaker | N/A |
| Min. Illumination | 0.002 Lux |
| White Light Distance | N/A |
| Protection | IP67 |
| Max. Resolution & Frame Rate | 2592x1944 @ 20fps |
| Wide Dynamic Range | 120dB |
| Housing | Metal+Plastic |
| Alarm I/O | N/A |
| Memory Slot | 512GB |
| Video Compression | S+265/H.265/H.264 |
| Operating Conditions | -40°C to 60°C, 0-95% RH |
| AI | Tripwire, Perimeter, Motion Detection |

Value Series

Sharp Series

Intelligent Series

CS-15XS L-2.8mm



6 YEAR
WARRANTY

| | |
|---|--|
| Image Sensor | 8MP |
| Lens | 2.8mm Fixed |
| Max. IR Distance | 30m |
| Audio I/O | N/A |
| Built-In Microphone | Yes |
| Built-In Speaker | N/A |
| Min. Illumination | 0.003 Lux |
| White Light Distance | N/A |
| Protection | IP67 |
| Max. Resolution & Frame Rate | 3840×2160 @ 20fps |
| Wide Dynamic Range | 120dB |
| Housing | Metal |
| Alarm I/O | N/A |
| Memory Slot | 512GB |
| Video Compression | S+265/H.265/H.264 |
| Operating Conditions | -40°C to 60°C, 0-95% RH |
| AI | Tripwire, Perimeter, Motion Detection |

CS-18XS M-2.8mm

Value Series

Sharp Series

Intelligent Series



6 YEAR
WARRANTY

| | |
|------------------------------|---|
| Image Sensor | 5MP |
| Lens | 2.8mm Fixed |
| Max. IR Distance | 30m |
| Audio I/O | 1/1 |
| Built-In Microphone | Yes |
| Built-In Speaker | Yes |
| Min. Illumination | Color - 0.002 Lux |
| White Light Distance | 15m |
| Protection | IP67 |
| Max. Resolution & Frame Rate | 2880x1620 @ 30fps |
| Wide Dynamic Range | 120dB |
| Housing | Metal |
| Alarm I/O | (1/1) |
| Memory Slot | 512GB |
| Video Compression | S+265/H.265/H.264 |
| Operating Conditions | -40°C to 65°C, 0~95% RH |
| AI | Tripwire, Perimeter, Human & Vehicle Classification, Face Capture |



CS-15XQ 2.8mm

Value Series

Sharp Series

Intelligent Series



6 YEAR
WARRANTY

| | |
|------------------------------|---|
| Image Sensor | 8MP |
| Lens | 2.8mm Fixed |
| Max. IR Distance | 30m |
| Audio I/O | 1/1 |
| Built-In Microphone | Yes |
| Built-In Speaker | Yes |
| Min. Illumination | Color - 0.002 Lux |
| White Light Distance | 15-20m |
| Protection | IP67 |
| Max. Resolution & Frame Rate | 3840x2160 @ 20fps |
| Wide Dynamic Range | 120dB |
| Housing | Metal |
| Alarm I/O | (1/1) |
| Memory Slot | 512GB |
| Video Compression | S+265/H.265/H.264 |
| Operating Conditions | -40°C to 65°C, 0~95% RH |
| AI | Tripwire, Perimeter, Human & Vehicle Classification |



CS-18XQ 2.8mm

Value Series

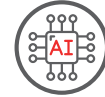
Sharp Series

Intelligent Series



6 YEAR
WARRANTY

| | |
|---|--|
| Image Sensor | 8MP |
| Lens | 2.7mm - 13.5 mm |
| Max. IR Distance | 50m |
| Audio I/O | 1/1 |
| Built-In Microphone | Yes |
| Built-In Speaker | N/A |
| Min. Illumination | 0.01 Lux |
| White Light Distance | N/A |
| Protection | IP67 |
| Max. Resolution & Frame Rate | 3840×2160@20fps |
| Wide Dynamic Range | 120dB |
| Housing | Metal |
| Alarm I/O | 2/1 |
| Memory Slot | 512GB |
| Video Compression | S+265/H.265/H.264 Motion JPEG |
| Operating Conditions | -35°C to 65°C, 0-95% RH |
| AI | Tripwire, Double Tripwire, Perimeter, Object Abandon, Object Lost, Loitering, Running, Parking, Crowd Detection, People Counting, On Duty Detection, Video Abnormal, Audio Abnormal, Heatmap, Safety Helmet Detection, Human/Vehicle Classification |

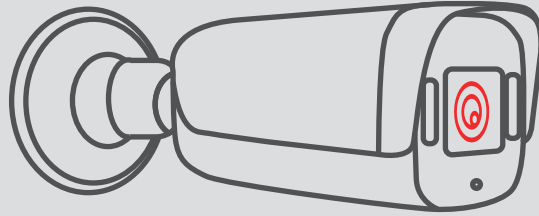


CS-18SS M-2.7-13.5mm

Value Series

Sharp Series

Intelligent Series



Bullets



CS-I8WS M-2.8mm



CS-I8WQ 2.8mm



CS-I4UV M-4mm



CS-I82V 180



CS-I8TS M-2.7-13.5mm



CS-I5LQ T-4mm



6YEAR
WARRANTY



| | |
|---|---------------------------------------|
| Image Sensor | 8MP |
| Lens | 2.8mm Fixed |
| Max. IR Distance | 50m |
| Audio I/O | N/A |
| Built-In Microphone | Yes |
| Built-In Speaker | N/A |
| Min. Illumination | 0.003 Lux |
| White Light Distance | N/A |
| Protection | IP67 |
| Max. Resolution & Frame Rate | 3840x2160 @ 20fps |
| Wide Dynamic Range | 120dB |
| Housing | Metal |
| Alarm I/O | N/A |
| Memory Slot | 512GB |
| Video Compression | S+265/H.265/H.264 |
| Operating Conditions | -40°C to 65°C, 0-95% RH |
| AI | Tripwire, Perimeter, Motion Detection |

Value Series

Sharp Series

Intelligent Series

CS-18WS M-2.8mm



6 YEAR
WARRANTY



| | |
|---|--|
| Image Sensor | 8MP |
| Lens | 2.8mm Fixed |
| Max. IR Distance | 50m |
| Audio I/O | 1/1 |
| Built-In Microphone | Yes |
| Built-In Speaker | Yes |
| Min. Illumination | Color - 0.002 Lux |
| White Light Distance | 15-20m |
| Protection | IP67 |
| Max. Resolution & Frame Rate | 3840×2160 @ 20fps |
| Wide Dynamic Range | 120dB |
| Housing | Metal |
| Alarm I/O | (1/1) |
| Memory Slot | 512GB |
| Video Compression | S+265/H.265/H.264 |
| Operating Conditions | -40°C to 65°C, 0-95% RH |
| AI | Tripwire, Perimeter, Human/Vehicle Classification |



CS-18WQ 2.8mm

Value Series

Sharp Series

Intelligent Series



6 YEAR
WARRANTY



| | |
|------------------------------|---|
| Image Sensor | 4MP |
| Lens | 4mm Fixed |
| Max. IR Distance | N/A |
| Audio I/O | N/A |
| Built-In Microphone | Yes |
| Built-In Speaker | N/A |
| Min. Illumination | Color - 0.0001 Lux |
| White Light Distance | 15m |
| Protection | IP67 |
| Max. Resolution & Frame Rate | 2688x1520 @ 30fps |
| Wide Dynamic Range | 120dB |
| Housing | Metal |
| Alarm I/O | N/A |
| Memory Slot | 512GB |
| Video Compression | S+265/H.265/H.264 |
| Operating Conditions | -40°C to 65°C, 0-95% RH |
| AI | Tripwire, Perimeter, Human/Vehicle Classification |



CS-14UV M-4mm

Value Series

Sharp Series

Intelligent Series



6 YEAR
WARRANTY



| | |
|------------------------------|---|
| Image Sensor | 2x4MP=8MP |
| Lens | 2.8mm Fixed |
| Max. IR Distance | N/A |
| Audio I/O | 1/1 |
| Built-In Microphone | Yes |
| Built-In Speaker | Yes |
| Min. Illumination | Color - 0.0001 Lux |
| White Light Distance | 15m |
| Protection | IP67 |
| Max. Resolution & Frame Rate | 4640x1728 @ 25fps |
| Wide Dynamic Range | 120dB |
| Housing | Metal + Plastic |
| Alarm I/O | (1/1) |
| Memory Slot | 512GB |
| Video Compression | S+265/H.265/H.264B/Motion JPEG |
| Operating Conditions | -40°C to 65°C, 0~95% RH |
| AI | Tripwire, Perimeter, Human & Vehicle Classification |



CS-182V 180

Value Series

Sharp Series

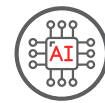
Intelligent Series



6 YEAR
WARRANTY



| | |
|---|--|
| Image Sensor | 8MP |
| Lens | 2.7mm - 13.5 mm |
| Max. IR Distance | 80m |
| Audio I/O | 1/1 |
| Built-In Microphone | Yes |
| Built-In Speaker | N/A |
| Min. Illumination | 0.003 Lux |
| White Light Distance | N/A |
| Protection | IP67 |
| Max. Resolution & Frame Rate | 3840×2160@30fps |
| Wide Dynamic Range | 120dB |
| Housing | Metal |
| Alarm I/O | 2/1 |
| Memory Slot | 512GB |
| Video Compression | S+265/H.265/H.264 Motion JPEG |
| Operating Conditions | -35°C to 65°C, 0-95% RH |
| AI | Tripwire, Double Tripwire, Perimeter, Object Abandon, Object Lost, Loitering, Running, Parking, Crowd Detection, People Counting, On Duty Detection, Video Abnormal, Audio Abnormal, Heatmap, Safety Helmet Detection, Human/Vehicle Classification |



CS-187S M-2.7-13.5mm

Value Series

Sharp Series

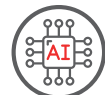
Intelligent Series



6 YEAR
WARRANTY



| | |
|--------------------------------------|--|
| Image Sensor | Optical: 2880×1620@30fps Thermal: 1280×720@25fps Vanadium Oxide Uncooled Focal Plane Arrays |
| Pixel Interval | 12μm |
| Temperature Detection | -15°~550°C |
| NETD | ≤55mK(@25°C , F#:1.1) |
| Min. Illumination | 0.002Lux |
| FOV: Horizontal field of view | Thermal: 56° - Optical: 88.7° |
| Measurement Accuracy | Max ±2% |
| Measurement Distance | 80m |
| Wide Dynamic Range | 120 dB |
| Focal Length | 4mm Fixed |
| Video Analytics | Tripwire, Double Tripwire, Perimeter, Video Abnormal, Audio Abnormal, Human/Vehicle Classification |
| Operating Conditions | -40° to 65°C |
| Protection | IP67 / Surge 4000V / ESD 6000V |



Value Series

Sharp Series

Intelligent Series

CS-15LQ T-4mm



Speed Domes



CS-P34S WIFI-4mm



CS-P44S 25XA



CS-P66V 25XA-180



CS-P48M 63X



CS-P88M 44XA



CS-P58M T-44X



| | |
|---|--|
| Megapixel | 3 MP |
| Lens / Zoom | 4mm Fixed |
| Max. IR Distance | 50m |
| Auto Tracking | Yes |
| Max. Resolution & Frame Rate | 2304 × 1296 @ 25 fps |
| Built-In Microphone | Yes |
| Built-In Speaker | Yes |
| Audio I/O | N/A |
| Alarm I/O | N/A |
| Min. Illumination | 0.02 Lux |
| Protection | IP67 |
| Memory Slot | 512 GB |
| Power | DC 12V±25% |
| Operating Conditions | -30°C to 60°C (-22°F to 140°F), <95% RH |
| AI | Tripwire, Perimeter, Motion Detection, Human Tracking |



CS-P34S WIFI-4mm

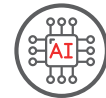
Value Series

Sharp Series

Intelligent Series



| | |
|------------------------------|---|
| Megapixel | 4 MP |
| Lens / Zoom | 4.8mm - 120mm |
| Max. IR Distance | 150m |
| Auto Tracking | Yes |
| Max. Resolution & Frame Rate | 2560 × 1440 @ 30 fps |
| Built-In Microphone | N/A |
| Built-In Speaker | N/A |
| Audio I/O | 1/1 |
| Alarm I/O | 1/1 |
| Min. Illumination | 0.001 Lux |
| Protection | IP66 |
| Memory Slot | 512 GB |
| Power | DC12V±10%/POE+(IEEE802.3 at) |
| Operating Conditions | -30°C to 65°C , <95% RH |
| AI | Tripwire, Double Tripwire, Perimeter, Object Abandon, Object Lost, Loitering, Running, Parking, Heatmap, Crowd Detection, People Counting, On Duty Detection, Safety Helmet Detection, Video Abnormal, Audio Abnormal, Human/Vehicle Classification, Face Capture |



CS-P44S 25XA

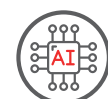
Value Series

Sharp Series

Intelligent Series



| | |
|------------------------------|--|
| Megapixel | Panorama: 6 MP - PTZ: 4 MP |
| Lens / Zoom | Panorama: 2.8mm - PTZ: 4.8-120mm (25X) |
| Max. IR Distance | 150m |
| Auto Tracking | Yes |
| Max. Resolution & Frame Rate | Panorama: 3840×1568 @ 30 fps - PTZ: 2560×1440@ 30 fps |
| Built-In Microphone | N/A |
| Built-In Speaker | Yes |
| Audio I/O | 1/1 |
| Alarm I/O | 2/1 |
| Min. Illumination | Color - 0.0001 Lux |
| Protection | IP66 |
| Memory Slot | 512 GB |
| Power | AC24V±25%; DC24V±10%; POE 802.3bt |
| Operating Conditions | -30°C to 65°C , <95% RH |
| AI | Panorama AI: Tripwire, Double Tripwire, Heatmap, Human & Vehicle Classification PTZ AI: Tripwire, Double Tripwire, Perimeter, Object Abandon, Object Lost, Loitering, Running, Parking, Crowd Detection, People Counting, On Duty Detection, Video Abnormal, Audio Abnormal, Human & Vehicle Classification, Face Capture |



CS-P66V 25XA-180

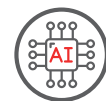
Value Series

Sharp Series

Intelligent Series



| | |
|------------------------------|---|
| Megapixel | 4 MP |
| Lens / Zoom | Motorized lens 5.7-359mm (63X) |
| Max. IR Distance | 300m |
| Auto Tracking | Yes |
| Laser | Up to 500m |
| Max. Resolution & Frame Rate | 2560x1440 @ 30 fps |
| Built-In Microphone | N/A |
| Built-In Speaker | Yes |
| Audio I/O | 1/1 |
| Alarm I/O | 8/2 |
| Min. Illumination | 0.001 Lux |
| Protection | IP66, TVS 6000V lightning protection, surge protection and voltage transient protection |
| Memory Slot | 512 GB |
| Power | DC36V±25%, POE++(IEEE802. bt) |
| Operating Conditions | -40°C to 70°C (IR OFF), -40°C to 40°C (IR ON), 0-95%RH |
| AI | Tripwire, Double Tripwire, Perimeter, Object Abandon, Object Lost, Loitering, Running, Parking, Heatmap, Crowd Detection, People Counting, On Duty Detection, Safety Helmet Detection, Video Abnormal, Audio Abnormal, Face Capture |



CS-P48M 63X

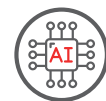
Value Series

Sharp Series

Intelligent Series



| | |
|---|---|
| Megapixel | 8 MP |
| Lens / Zoom | Motorized lens 5.7-250 mm (44X) |
| Max. IR Distance | 300m |
| Auto Tracking | Yes |
| Laser | Up to 500m |
| Max. Resolution & Frame Rate | 3840 × 2160 @ 30 fps |
| Built-In Microphone | N/A |
| Built-In Speaker | Yes |
| Audio I/O | 1/1 |
| Alarm I/O | 8/2 |
| Min. Illumination | 0.001 Lux |
| Protection | IP66 |
| Memory Slot | 512 GB |
| Power | DC36V±25%, PoE:IEEE 802.3bt |
| Operating Conditions | -40°C to 70°C , <95% RH |
| AI | Tripwire, Double Tripwire, Perimeter, Object Abandon, Object Lost, Loitering, Running, Parking, Heatmap, Crowd Detection, People Counting, On Duty Detection, Safety Helmet Detection, Human/Vehicle Classification Face Capture |



CS-P88M 44X

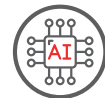
Value Series

Sharp Series

Intelligent Series



| | |
|---|---|
| Megapixel | Vanadium Oxide Uncooled Focal Plane Arrays |
| Thermal Resolution | 384×288 |
| Optical Resolution | up to 3072×1728@30fps |
| Smart IR, IR Range | 300m |
| Built-in Parts | Mic, Speaker, Automatic Wiper, Electronic Compass, GPS/BDS |
| Pixel Interval | 17μm |
| Response Waveband | 8μm~14μm |
| NETD | ≤40mK@f/1.0 |
| Min. Illumination | 0.001Lux |
| Thermal FOV | Horizontal: 7.5°, Vertical: 5.6° (Fixed 50mm) |
| Fire Detection Distance Based on the reference | Fire (2m×2m) 3000m |
| Wide Dynamic Range | 140dB |
| Focal Length | 6mm~264mm |
| Optical Lens Video Analytics | Tripwire, Double Tripwire, Perimeter, Object Abandon, Object Lost, Loitering, Running, Heatmap, Video Abnormal, Crowd Detection, Audio Abnormal, Demographics (People Counting), On Duty Detection, Safety Helmet Detection, Auto-Tracking, Face Capture, Early Warning |
| Thermal Lens Video Analytics | Tripwire, Double Tripwire, Perimeter, Temperature Alarm, Fire / Smoke Detection |
| Operating Conditions | -40°C to 70°C, 0-95%RH |
| Protection | IP66, Lightning Protection, Surge Protection and Voltage Transient Protection meets EN 55035:2017 |

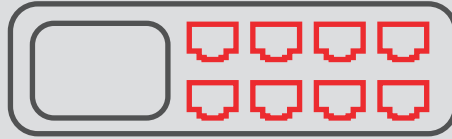


CS-P58M T-44X

Value Series

Sharp Series

Intelligent Series



NVRs



CS-N105 P4



CS-N110 P8



CS-N220 P16



CS-N440 NHC



CS-N440 P16H



CS-N880 NHC



CS-N440 M-AI



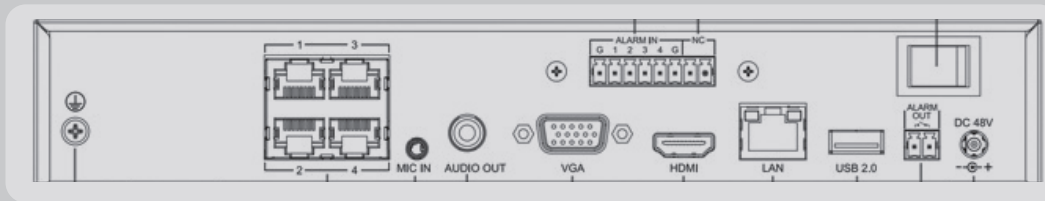
CS-N440 H-AI



CS-N440 P16-H-AI



CS-N880 H-AI



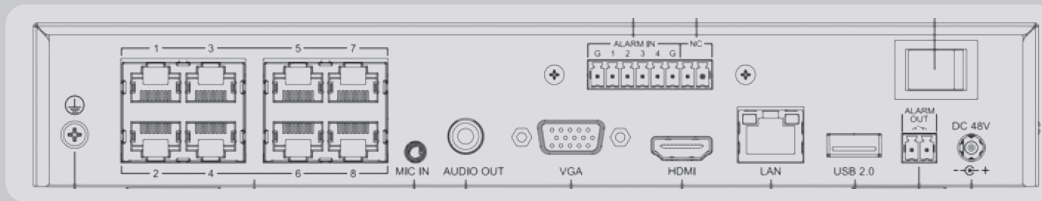
| | |
|------------------------|-----------------------------|
| IP Video Output | 5CH |
| PoE Port | 4 PoE Ports |
| Bandwidth I/O | 80Mbps / 80Mbps |
| Resolution | 8MP |
| Display Ports | HDMI and VGA (simultaneous) |
| Storage | 1x10TB HDD |
| Alarm I/O | 4 Alarm Inputs / 1 Output |
| Ethernet port | 1xRJ-45 Port, 10/100Mbps |

Value Series

Sharp Series

Intelligent Series

CS-N105 P4



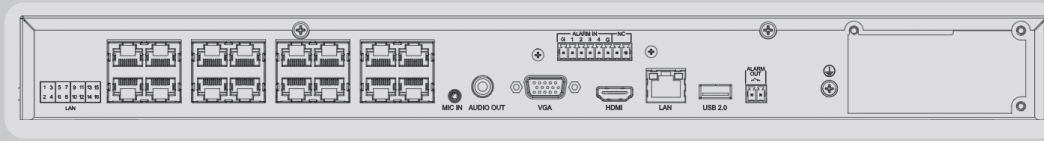
| | |
|------------------------|--|
| IP Video Output | 10CH |
| PoE Port | 8 PoE ports |
| Bandwidth I/O | 80Mbps / 80Mbps |
| Resolution | 8MP |
| Display Ports | HDMI and VGA (simultaneous) |
| Storage | 1x10TB HDD |
| Alarm I/O | 4 Alarm Inputs / 1 Output |
| Ethernet port | 1xRJ-45 Port, 10/100Mbps 8xRJ-45 Port, 10/100Mbps |

Value Series

Sharp Series

Intelligent Series

CS-N110 P8



| | |
|------------------------|--|
| IP Video Output | 20CH |
| PoE Port | 16 PoE ports |
| Bandwidth I/O | 160Mbps / 64Mbps |
| Resolution | 8MP |
| Display Ports | HDMI and VGA (simultaneous) |
| Storage | 2x10TB HDD |
| Alarm I/O | 4 Alarm Inputs / 1 Output |
| Ethernet port | 1xRJ-45 Port, 10/100/1000Mbps 16xRJ-45 Port, 10/100Mbps |

Value Series

Sharp Series

Intelligent Series

CS-N220 P16



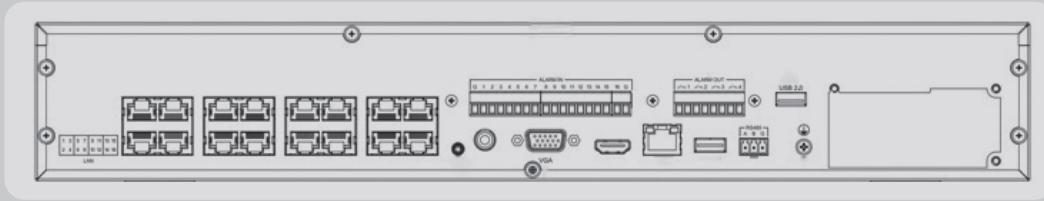
| | |
|------------------------|--------------------------------|
| IP Video Output | 40CH |
| PoE Port | N/A |
| Bandwidth I/O | 400Mbps / 400Mbps |
| Resolution | 16MP |
| Display Ports | 1xHDMI and 1xVGA (independent) |
| Storage | 4x10TB HDD |
| Alarm I/O | N/A |
| Ethernet port | 2xRJ-45 10/100/1000 Mbps |

Value Series

Sharp Series

Intelligent Series

CS-N440 NHC



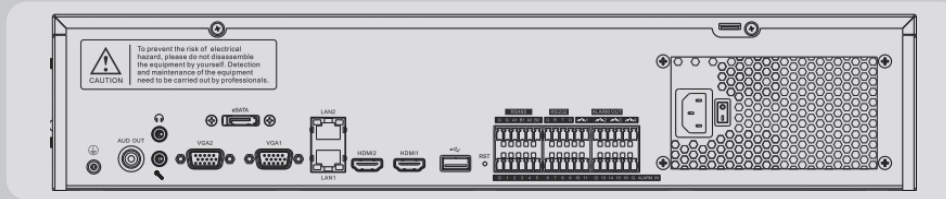
| | |
|------------------------|--|
| IP Video Output | 40CH |
| PoE Port | 16 PoE Ports |
| Bandwidth I/O | 400Mbps / 400Mbps |
| Resolution | 16MP |
| Display Ports | HDMI and VGA (independent) |
| Storage | 4x10TB HDD |
| Alarm I/O | 16 Alarm Inputs / 4 Outputs |
| Ethernet port | 1xRJ-45 10/100/1000 Mbps 16xRJ-45 10/100 Mbps |

Value Series

Sharp Series

Intelligent Series

CS-N440 P16H



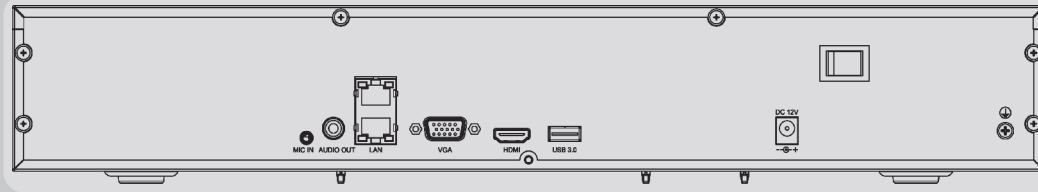
| | |
|------------------------|----------------------------------|
| IP Video Output | 80CH |
| PoE Port | N/A |
| Bandwidth I/O | 640Mbps / 320Mbps |
| Resolution | 16MP |
| Display Ports | 2x HDMI and 2x VGA (independent) |
| Storage | 8x24TB HDD |
| Alarm I/O | 16 Alarm Inputs / 4 Outputs |
| Ethernet port | 2xRJ-45 10/100/1000 Mbps |

Value Series

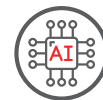
Sharp Series

Intelligent Series

CS-N880 N



| | |
|------------------------|---|
| IP Video Output | 40CH |
| PoE Port | N/A |
| Bandwidth I/O | 400Mbps / 400Mbps (AI on: 200Mbps / 200Mbps) |
| Resolution | 16MP |
| Display Ports | 1xHDMI and 1xVGA (independent) |
| Storage | 4x10TB HDD |
| Alarm I/O | 16 Alarm Inputs / 4 Outputs |
| Ethernet port | 2xRJ-45 10/100/1000 Mbps |
| AI by NVR | Face Detection; Face Recognition; Video Structuralization(excludes vehicle detection); Tripwire; Double Tripwire; Perimeter; Object Abandon; Object Missing; Running; Parking; Heatmap; Sleeping on Duty Detection; On Duty Detection; Smart Motion Detection; Loitering |
| VCA Search | Heatmap; Early-warning Search; Behavior Search; License Plate Search; Safety Helmet Search; Thermographic Retrieval; Duty Search; Electric Bicycle Retrieval; Face Search |

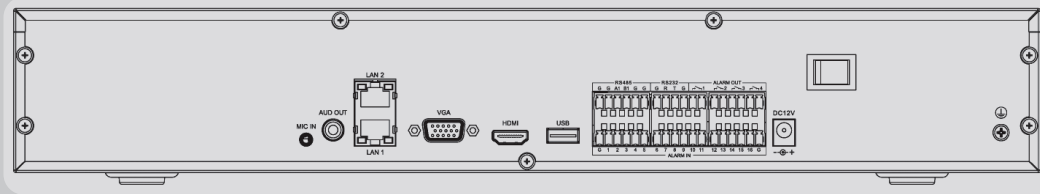


Value Series

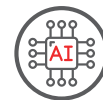
Sharp Series

Intelligent Series

CS-N440 M-AI



| | |
|------------------------|---|
| IP Video Output | 40CH |
| PoE Port | N/A |
| Bandwidth I/O | 400Mbps / 400Mbps (AI on: 200Mbps / 200Mbps) |
| Resolution | 16MP |
| Display Ports | 1xHDMI and 1xVGA (independent) |
| Storage | 4x10TB HDD |
| Alarm I/O | 16 Alarm Inputs / 4 Outputs |
| Ethernet port | 2xRJ-45 10/100/1000 Mbps |
| AI by NVR | Face Detection; Face Recognition; Video Structuralization(excludes vehicle detection); Tripwire; Double Tripwire; Perimeter; Object Abandon; Object Missing; Running; Parking; Heatmap; Sleeping on Duty Detection; On Duty Detection; Smart Motion Detection; Loitering |
| VCA Search | Heatmap; Early-warning Search; Behavior Search; License Plate Search; Safety Helmet Search; Thermographic Retrieval; Duty Search; Electric Bicycle Retrieval; Face Search |

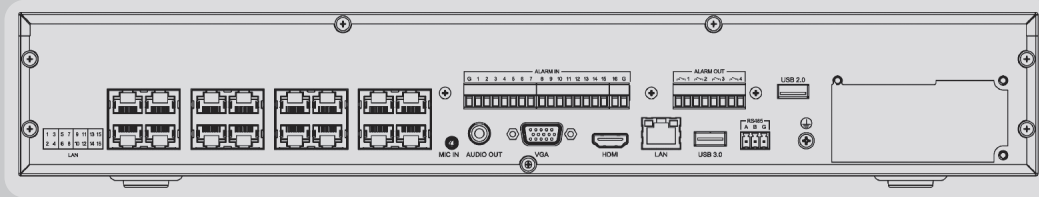


Value Series

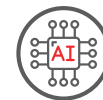
Sharp Series

Intelligent Series

CS-N440 H-AI



| | |
|------------------------|---|
| IP Video Output | 40CH |
| PoE Port | 16 PoE ports |
| Bandwidth I/O | 400Mbps / 400Mbps (AI on: 200Mbps / 200Mbps) |
| Resolution | 16MP |
| Display Ports | 1xHDMI and 1xVGA (independent) |
| Storage | 4x10TB HDD |
| Alarm I/O | 16 Alarm Inputs / 4 Outputs |
| Ethernet port | 1xRJ45 10/100/1000 Mbps 16xRJ45 10/100 Mbps |
| AI by NVR | Face Detection; Face Recognition; Video Structuralization(excludes vehicle detection); Tripwire; Double Tripwire; Perimeter; Object Abandon; Object Missing; Running; Parking; Heatmap; Sleeping on Duty Detection; On Duty Detection; Smart Motion Detection; Loitering |
| VCA Search | Heatmap; Early-warning Search; Behavior Search; License Plate Search; Safety Helmet Search; Thermographic Retrieval; Duty Search; Electric Bicycle Retrieval; Face Search |

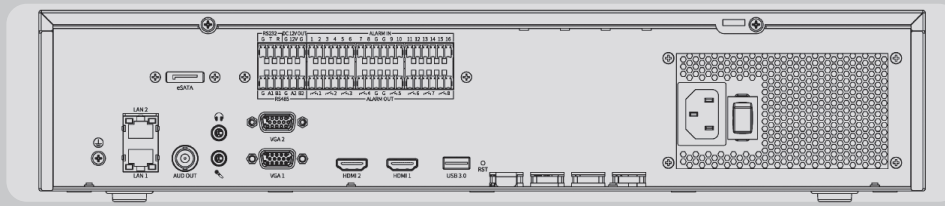


CS-N440 P16-H-AI

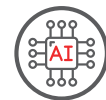
Value Series

Sharp Series

Intelligent Series



| | |
|------------------------|---|
| IP Video Output | 80CH |
| PoE Port | N/A |
| Bandwidth I/O | 400Mbps / 400Mbps (AI on: 320Mbps / 200Mbps) |
| Resolution | 16MP |
| Display Ports | 2x HDMI and 2x VGA (independent) |
| Storage | 8x24TB HDD |
| Alarm I/O | 16 Alarm Inputs / 4 Outputs |
| Ethernet port | 2xRJ-45 10/100/1000 Mbps |
| AI by NVR | Face Detection; Face Recognition; Video Structuralization(excludes vehicle detection); Tripwire; Double Tripwire; Perimeter; Object Abandon; Object Missing; Running; Parking; Heatmap; Sleeping on Duty Detection; On Duty Detection; Smart Motion Detection; Loitering |
| VCA Search | Heatmap; Early-warning Search; Behavior Search; License Plate Search; Safety Helmet Search; Thermographic Retrieval; Duty Search; Electric Bicycle Retrieval; Face Search |



Value Series

Sharp Series

Intelligent Series

CS-N880 H-AI

Accessories



Wall Mounts



CS-A25



CS-A27



CS-A29



CS-A28

Corner Mount



CS-A35

Pendant Mount



CS-DF21Y

Pole Mount



CS-A36

To see which accessories are compatible with each camera, please check the specification sheets.

Junction Boxes



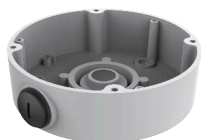
CS-P54BM V5/V3.0



CS-811



CS-A22



CS-P54BM V3



CS-P54BM V1



CS-P54AM V4

To see which accessories are compatible with each camera, please check the specification sheets.

Information





LASER TRACKING

CASE PTZ cameras offer a unique third layer of defense with their optional laser beam feature. This advanced deterrent function enhances security by tracking intruders and intimidating them to prevent unauthorized access. It acts as an additional layer of protection, complementing the camera's warning flashlights and speaker system. The laser beam is visible to the human eye but is designed to be eye-safe, ensuring it provides effective deterrence without causing harm.



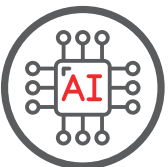
PANORAMIC VIEW

CASE dual lens 180-degree cameras provide an expansive and seamless panoramic view, capturing wide areas with remarkable clarity. By utilizing two lenses, these cameras stitch together a continuous 180-degree field of vision, eliminating blind spots and offering superior coverage compared to traditional single-lens cameras. This technology is especially advantageous in large spaces like parking lots, warehouses, or public areas, reducing the need for multiple cameras and minimizing installation costs. The dual-lens system also enhances image quality across the entire field of view, ensuring no detail is missed. CASE dual lens 180-degree cameras deliver comprehensive and reliable surveillance with enhanced efficiency.



AUTO TRACKING

Several of our CASE Pan-Tilt-Zoom (PTZ) cameras come equipped with an Auto-Tracking feature. This advanced functionality enhances your security system by automatically tracking any potential intruder or trespasser on the property. Auto-Tracking ensures that you capture high-quality footage and provides continuous monitoring of the intruder's movements, allowing you to see their direction and actions in real time. This feature is crucial for improving situational awareness and response capabilities.



AI

CASE Cameras are designed with advanced AI capabilities to enhance security and operational efficiency. They support essential features like line crossing and perimeter breach detection, ensuring timely alerts for unauthorized access. For more complex scenarios, the cameras offer cutting-edge AI analytics, including face capture, human and vehicle classification, and even safety helmet detection. These features make CASE Cameras an ideal solution for a wide range of applications, from basic surveillance to advanced safety and compliance monitoring.



Thermal

CASE Thermal Cameras are equipped with thermal imaging technology, and they provide precise detection in complete darkness, harsh weather, or challenging environments where traditional cameras may fail. Its robust design ensures durability, while intelligent analytics, including human and vehicle classification, enhance security monitoring. Ideal for critical infrastructure, perimeter defense, and industrial applications, the CASE Thermal Camera offers reliable performance and peace of mind.



COLOR MAKER

Combined with a large aperture and a large sensor, Case Color Maker technology enables the camera to obtain a large amount of light in low-light environments. Even in total darkness, cameras equipped with Color Maker technology can capture vivid color images and reveal more details in scenes with the help of warm light illumination. Case Color Maker technology makes it possible for the camera to achieve the goal of 24-hour full-color imaging.



EARLY WARNING

Based on AI deep learning, Case EWarning combines light and audio warnings to achieve prevention, mid-way intervention, and post-event investigation. It can precisely differentiate between vehicles and people, and warn them respectively, increasing the accuracy and effectiveness of warnings compared to traditional OpenCV systems.



WIFI

CASE WIFI Cameras offer a flexible and efficient surveillance solution for both residential and commercial applications. Designed for easy installation, these cameras eliminate the need for extensive wiring while maintaining high-quality video performance. Equipped with advanced features like motion detection, remote viewing, and two-way audio, they provide comprehensive monitoring and real-time interaction. With robust encryption and reliable connectivity, CASE WIFI Cameras ensure secure and uninterrupted surveillance, making them an ideal choice for modern security needs.

Software

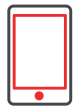


Software

To ensure seamless connectivity and effective management of your CASE security systems, we have developed customized software for both personal computers and mobile devices. Our applications are compatible with Mac and Windows operating systems for PCs, and Android and iOS for mobile devices. By installing these tools, named Net Video for PCs and Video Sight for mobile devices, you will be able to view camera footage and manage your systems.

In addition, we provide the Search Config Tool, a practical utility designed to help you locate cameras and NVRs on your network, add them, and configure their settings. This tool also includes a storage calculator, allowing you to estimate the storage requirements based on the number of cameras and their megapixel specifications, thereby streamlining your project planning.

Video Sight



iOS



Android



NetVideo VMS



Mac



Windows



SEARCH CONFIG TOOL



Mac



Windows





6Year
Warranty

24/7
Support

canadasecurity.com

